

Highly efficient Indirectly Heated Water Tanks with two, one and without heat exchangers

- Energy efficiency class A for all models.
- **Up to 30% lower heat losses*.**
- The range includes models with 200l and 300l of capacity.
- CrystalTech Pro: excellent enamel coating and highly efficient, CFC free, PU foam insulation.
- Magnesium anode in upper and lower zone.
- Thermoindicator.
- Service opening for easy inspection.
- Electric heater mounting possibility.
- Thermoregulator and thermoprobe mounting position.
- Environmentally friendly product.
- This product accomplishes the highest requirements for energy efficiency and performance.
- White PS jacket for elegant appearance.**

Disclaimers:

* For the EV 10/7 S2 300 75, class A model in comparison with EV 10/7 S2 300 65, class B model.

** Models with white PS jacket are optional. The range comes with grey soft jacket.



PRO

PROFI LINE

TECHNICAL DATA

Indirectly Heated Water Tanks with two heat exchangers

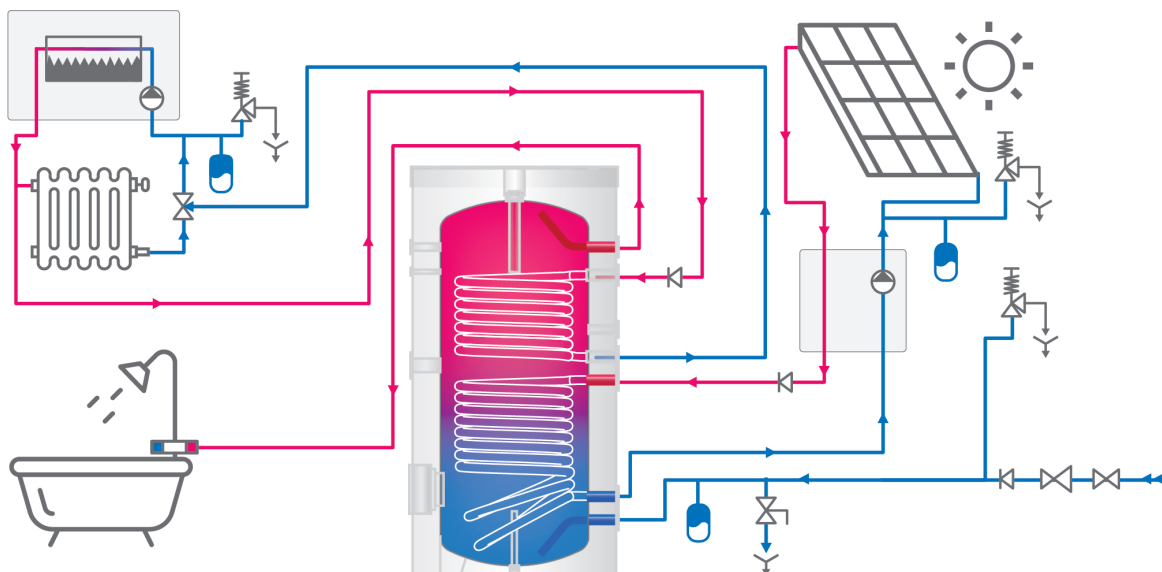
MODEL		EV 7/5 S2 200 65	EV 10/7 S2 300 75
Art. number	Nº	302653	302654
Capacity	L	192	279
Net weight	kg	68	95
Insulation (rigid PU)	mm	75	100
Heat exchanger surface S1	m ²	0.75	1.21
Heat exchanger surface S2	m ²	0.54	0.85
Heat exchanger capacity S1	L	4.6	7.4
Heat exchanger capacity S2	L	3.3	5.2
Heat losses ΔT 45K	W	41	46
Energy efficiency class		A	A
Maximum operational temperature	°C	95	95
Maximum operational temperature of heat exchanger	°C	110	110
Rated pressure	bar	8	8
Rated pressure of the heat exchanger	bar	6	6
Heat exchanger reheat performance P at flow rate of primary side (S1)	kW / (L/min)	16.4 / (20.8)	24.2 / (25.0)
Heat exchanger reheat performance P at flow rate of primary side (S2)	kW / (L/min)	13.1 / (20.8)	16.8 / (25.0)
V40 - hot water delivered with a temperature of at least 40°C (S1)	L	304.4	433.6
V40 - hot water delivered with a temperature of at least 40°C (S2)	L	154.3	219.4
Reheat time 10-60°C rate at primary side (S1)	min / (L/min)	36.5 / (20.8)	35.9 / (25.0)
Reheat time 10-60°C rate at primary side (S2)	min / (L/min)	22.8 / (20.8)	23.85 / (25.0)
Coil Pressure drop at flow rate m ³ /h (S1)	mbar / (L/min)	21.3 / (20.8)	73.7 / (25.0)
Coil Pressure drop at flow rate (S2)	mbar / (L/min)	14.6 / (20.8)	54.0 / (25.0)

* outlet - inlet temperature of the heat transfer fluid

** 10°C - cold water temperature, 60°C - hot water temperature (domestic water)

Add a disclaimer that "All models can be ordered with white PS jacket."

INSTALLATION SCHEME



TECHNICAL DRAWING AND DIMENSIONS

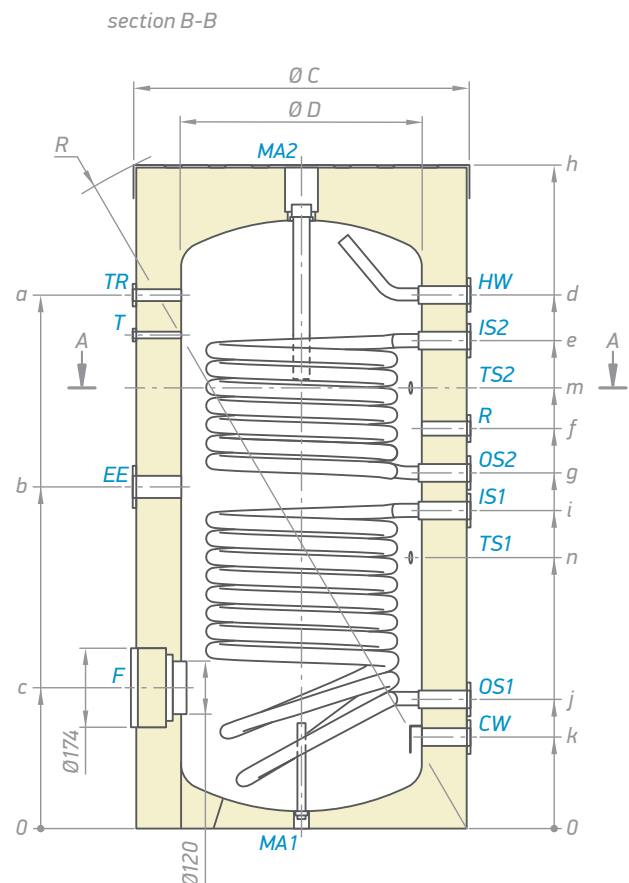
Indirectly Heated Water Tanks with two heat exchangers

for ALL MODELS

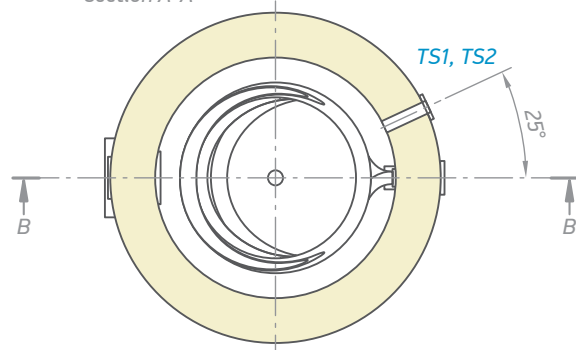
CW	cold water inlet	G 1"
HW	hot water outlet	G 1"
IS1	heat exchanger inlet	G 1"
IS2	heat exchanger inlet	G 1"
OS1	heat exchanger outlet	G 1"
OS2	heat exchanger outlet	G 1"
R	recirculation	G ¾"
T	thermometer	Ø 14 x 1.5
TR	opening for thermoregulator	G ½"
TS1	thermo sensor pocket level 1	G ½"
TS2	thermo sensor pocket level 2	G ½"
EE	opening for electric element	G 1½"
MA1	Magnesium anode 1	G ¾"
MA2	Magnesium anode 2	G1½"

Thread designations according to EN ISO 228-1!

Dimensions ±5 mm		EV 7/5 S2 200 65	EV 10/7 S2 300 75
h	mm	1274	1495
a	mm	993	1207
b	mm	628	760
c	mm	314	314
d	mm	993	1207
e	mm	886	1104
f	mm	746	903
g	mm	671	803
i	mm	585	718
j	mm	284	288
k	mm	199	203
m	mm	815	996
n	mm	478	610
R	mm	1345	1563
Ø C	mm	650	750
Ø D	mm	500	550



section A-A



TECHNICAL DATA

Indirectly Heated Water Tanks with one heat exchanger

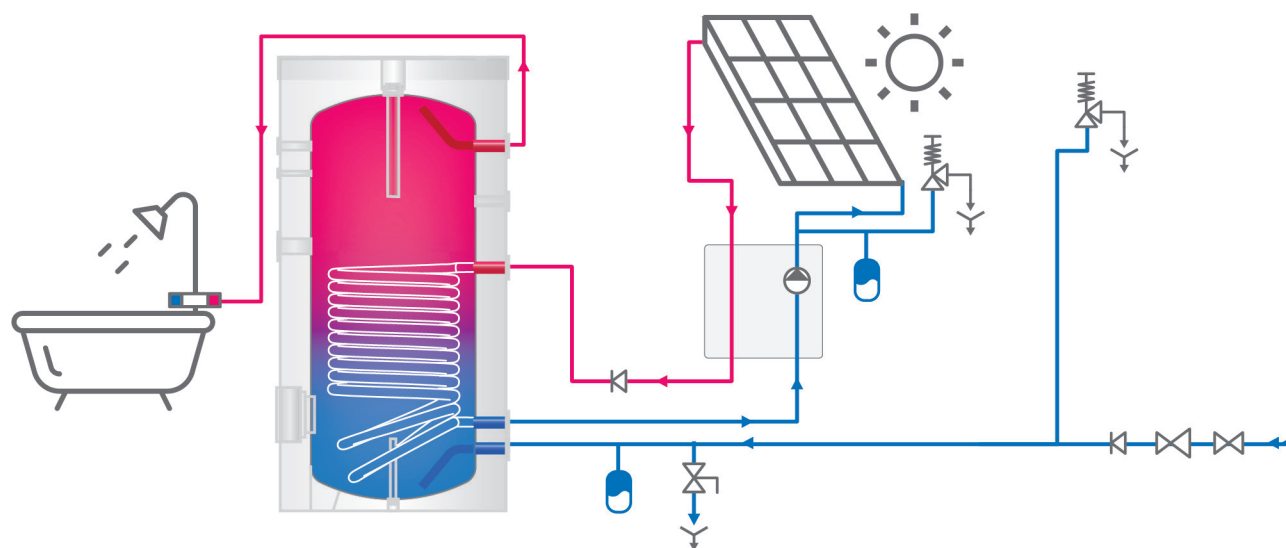
MODEL		EV 9S 200 65	EV 12S 300 75
Art. number	Nº	302733	302731
Capacity	L	195	283
Net weight	kg	68	95
Insulation (rigid PU)	mm	75	100
Heat exchanger surface S1	m ²	0.96	1.45
Heat exchanger capacity S1	L	5.8	8.8
Heat losses ΔT 45K	W	41	46
Energy efficiency class		A	A
Maximum operational temperature	°C	95	95
Maximum operational temperature of heat exchanger	°C	110	110
Rated pressure	bar	8	8
Rated pressure of the heat exchanger	bar	6	6
Heat exchanger reheat performance P at flow rate of primary side (S1)	kW / (L/min)	24.0 / (20.8)	28.9 / (25.0)
V40 - hot water delivered with a temperature of at least 40°C (S1)	L	345.8	435.3
Reheat time 10-60°C rate at primary side (S1)	min / (L/min)	29.0 / (20.8)	30.35 / (25.0)
Coil Pressure drop at flow rate m ³ /h (S1)	mbar / (L/min)	31.0 / (20.8)	87.5 / (25.0)

* outlet - inlet temperature of the heat transfer fluid

**10°C - cold water temperature, 60°C - hot water temperature (domestic water)

Add a disclaimer that "All models can be ordered with white PS jacket."

INSTALLATION SCHEME



TECHNICAL DRAWING AND DIMENSIONS

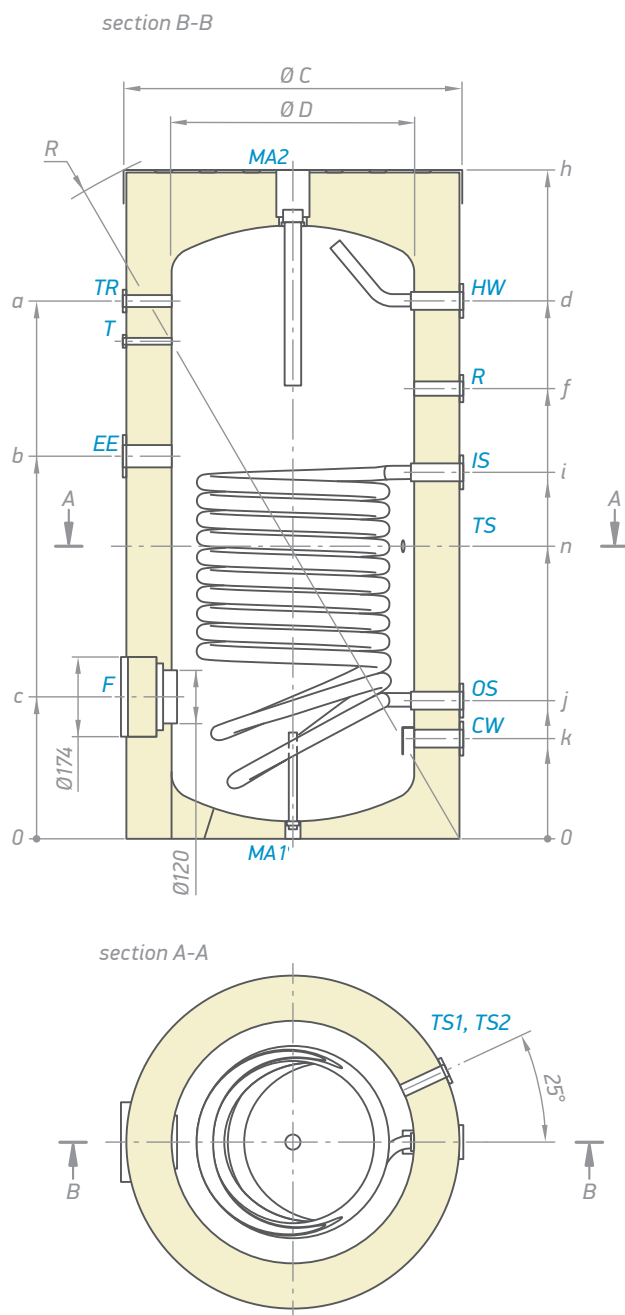
Indirectly Heated Water Tanks with one heat exchanger

for ALL MODELS

CW	cold water inlet	G 1"
HW	hot water outlet	G 1"
IS1	heat exchanger inlet	G 1"
OS1	heat exchanger outlet	G 1"
R	recirculation	G ¾"
T	thermometer	Ø 14 x 1.5
TR	opening for thermoregulator	G ½"
TS1	thermo sensor pocket level 1	G ½"
EE	opening for electric element	G 1½"
MA1	Magnesium anode 1	G ¾"
MA2	Magnesium anode 2	G1½"

Thread designations according to EN ISO 228-1!

Dimensions ±5 mm		EV 9S 200 65	EV 12S 300 75
h	mm	1274	1495
a	mm	993	1207
b	mm	714	846
c	mm	314	314
d	mm	771	1207
f	mm	771	1010
i	mm	671	804
j	mm	284	288
k	mm	199	203
n	mm	564	653
R	mm	1345	1563
Ø C	mm	650	750
Ø D	mm	500	550



TECHNICAL DATA

Indirectly Heated Water Tanks without heat exchangers

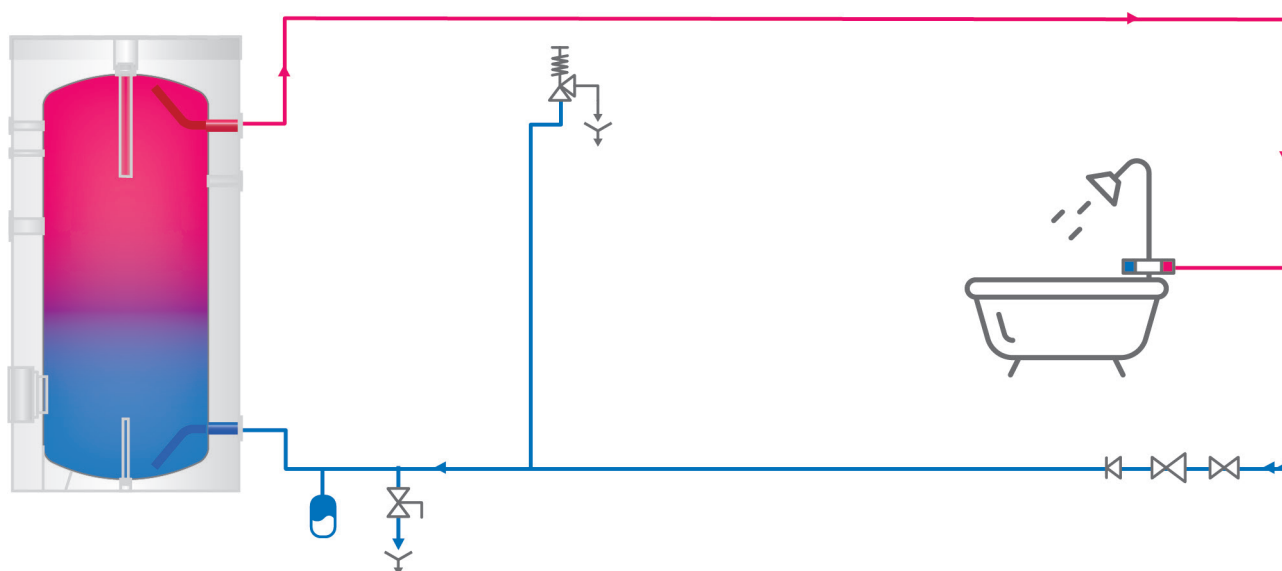
MODEL		EV 200 65	EV 300 75
Art. number	N°	302732	302730
Capacity	L	202	294
Net weight	kg	48	69
Insulation (rigid PU)	mm	75	100
Heat losses ΔT 45K	W	41	46
Energy efficiency class		A	A
Maximum operational temperature	°C	95	95
Rated pressure	bar	8	8

* outlet - inlet temperature of the heat transfer fluid

**10°C - cold water temperature, 60°C - hot water temperature (domestic water)

Add a disclaimer that "All models can be ordered with white PS jacket."

INSTALLATION SCHEME



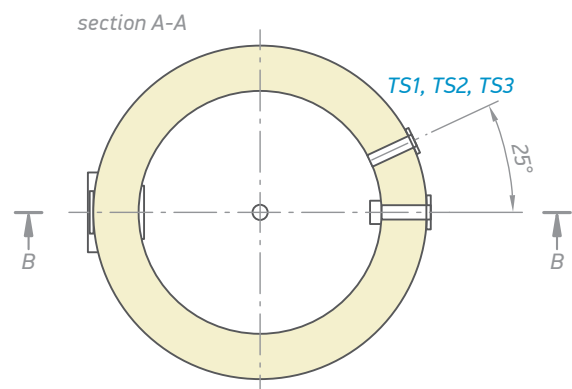
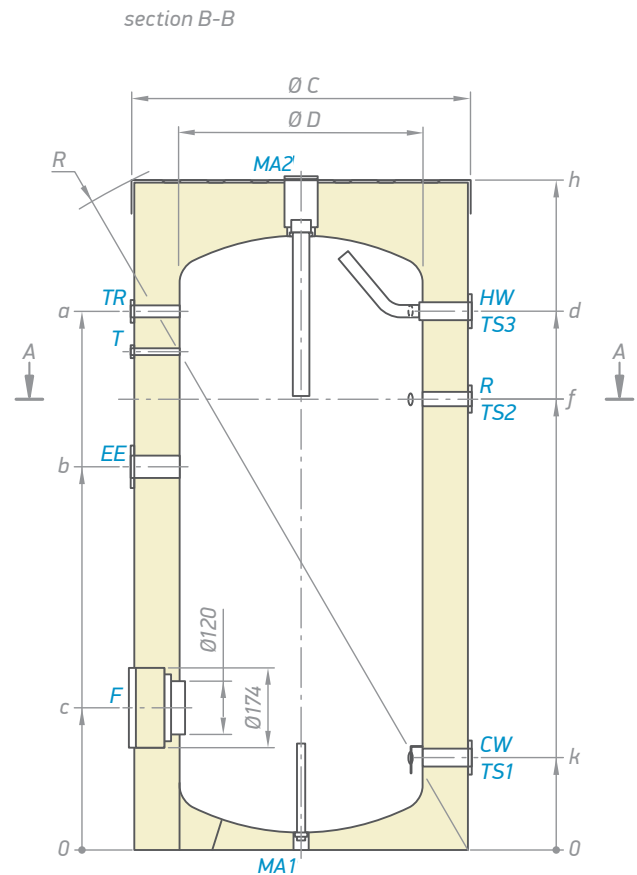
TECHNICAL DRAWING AND DIMENSIONS

Indirectly Heated Water Tanks without heat exchangers

for ALL MODELS		
CW	cold water inlet	G 1"
HW	hot water outlet	G 1"
R	recirculation	G ¾"
T	thermometer	Ø 14 x 1.5
TR	opening for thermoregulator	G ½"
TS1	thermo sensor pocket level 1	G ½"
TS2	thermo sensor pocket level 2	G ½"
TS3	thermo sensor pocket level 3	G ½"
EE	opening for electric element	G 1½"
MA1	Magnesium anode 1	G ¾"
MA2	Magnesium anode 2	G1½"

Thread designations according to EN ISO 228-1!

Dimensions ±5 mm		EV 200 65	EV 300 75
h	mm	1247	1495
a	mm	993	1207
b	mm	714	846
c	mm	314	314
d	mm	993	1207
f	mm	771	1010
k	mm	199	203
R	mm	1345	1563
Ø C	mm	650	750
Ø D	mm	500	550





Tesy Ltd.

Sofia Park, Building 16 V, 2nd Floor
1166 Sofia, Bulgaria

tesy.com



This catalogue is a marketing material and it is not an offer.
For specific models, please contact your dealer.

Copyright © All Rights Reserved, v. 1 2022 – TESY Ltd.